



# **SCHONLAU WERKE**



**Josef Schonlau  
Maschinenfabrik und  
Eisengießerei GmbH & Co. KG**

**Ernst-von-Bayern-Straße 22  
59590 Geseke  
GERMANY**

**phone: +49 ( 0 ) 2942 505-0  
fax: +49 ( 0 ) 2942 505-11  
[www.schonlau-werke.de](http://www.schonlau-werke.de)**



## COMPANY

SCHONLAU is a medium-sized, family-led customer oriented iron foundry in the area East Westphalia/Germany.

With **170 employees** SCHONLAU achieves a **year tonnage of 12.500 tons**.

Due to substantial investments in the production area, the production of grey- and nodular cast iron components could almost be doubled.

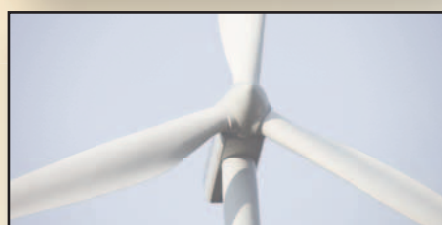
The SCHONLAU range of competence contains **castings of 5 kgs to 4.000 kgs made of GJL, GJS, GJV, ADI, Ni-Resist** as well as further special alloys.

Our straight company philosophy – quality, flexibility and far above superior adherence to delivery dates – also contains the close cooperation with our customers.

SCHONLAU lives frank and fair handling not only among each other, but also with customers and business friends.



# MADE IN GERMANY



## CUSTOMERS

- CHEMICAL INDUSTRY
- CONSTRUCTION MACHINERY
- DRIVE SYSTEMS AND COMPONENTS
- FITTINGS
- MACHINE BUILDING
- MACHINE TOOL BUILDING
- PUMPS AND COMPRESSORS
- RAILWAY VEHICLE MANUFACTURING
- SHIPBUILDING
- UTILITY VEHICLE BUILDING
- WIND ENERGY



## QUALITY MANAGEMENT

To stay in the standards of legislation and to fulfil the high requirements of our customers, our quality management use the following test equipments, in particular:

- PREVENTIVE MOLDING SAND CONTROL
- AUTOMATED CHARGE CONTROL
- PLANT CONTROL BY REAL-TIME VISUALIZATION
- DIGITAL CONTROL OF CASTING TEMPERATURE AND WEIGHT

**Whole data are online documented and analyzed.**

According to high-grade casting we possess usual test equipments as specified:

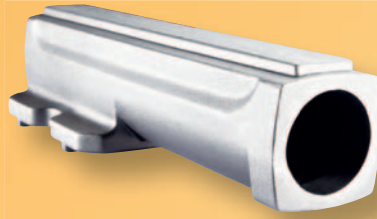
- MOLDING SAND TESTING
- SPECTROGRAPHIC AND THERMAL ANALYSIS
- METALLOGRAPHIC LABORATORY
- MAGNETIC CRACK/  
PARTICLE DETECTION/  
INSPECTION
- DYE PENETRANT TECHNIQUE
- ULTRASONIC TESTING
- TENSILE/TENSION TEST
- NOTCHED-BAR IMPACT TEST
- BRINELL HARDNESS TEST
- PART SURVEYING

**We are certified according to DIN EN ISO 9001:2000**

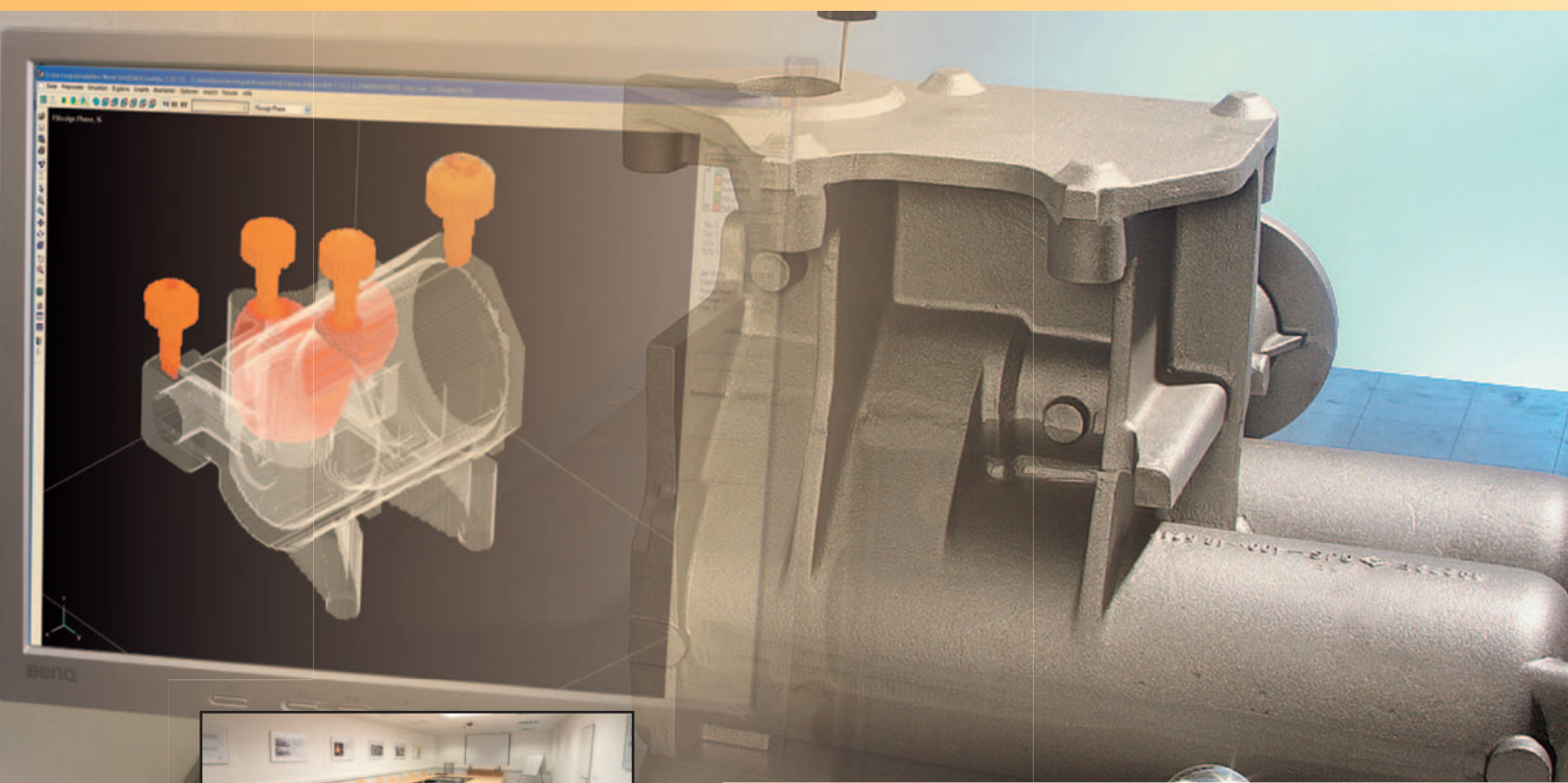
- AMERICAN BUREAU OF SHIPPING
- BUREAU VERITAS
- DET NORSKE VERITAS
- DEUTSCHE BAHN
- GERMANISCHER LLOYD
- LLOYD'S REGISTER
- TÜV NORD
- TÜV PRESSURE VESSEL

In close cooperation with **bdguss** and **IFG**, extensive quality audits are regularly conducted.





## TECHNICAL KNOW-HOW

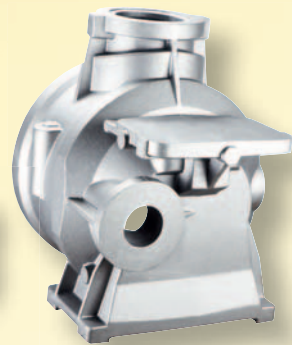
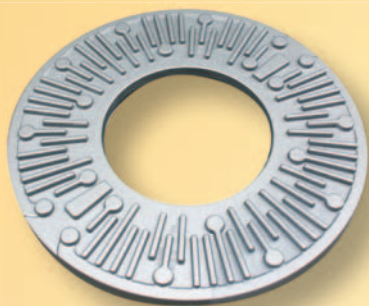


one of our meeting rooms

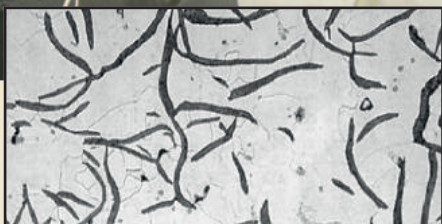
The SCHONLAU service already begins before the casting process. For a successful development partnership our **competent foundry engineers** are on your side.

The key to the optimal construction unit lies in cooperation. We clear the way for an **economic and appropriate to casting design** and support you to find the optimal material for your construction unit.

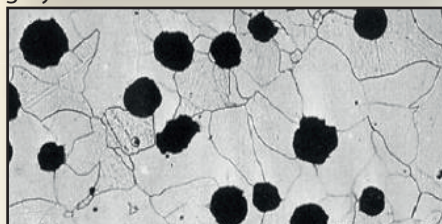
Besides we offer qualified **technical designer conferences** to our customers.



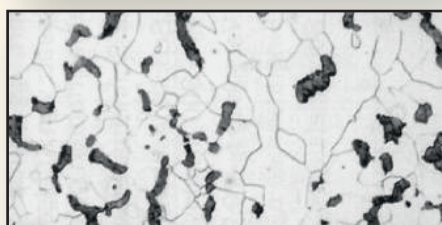
## MATERIALS



grey cast iron



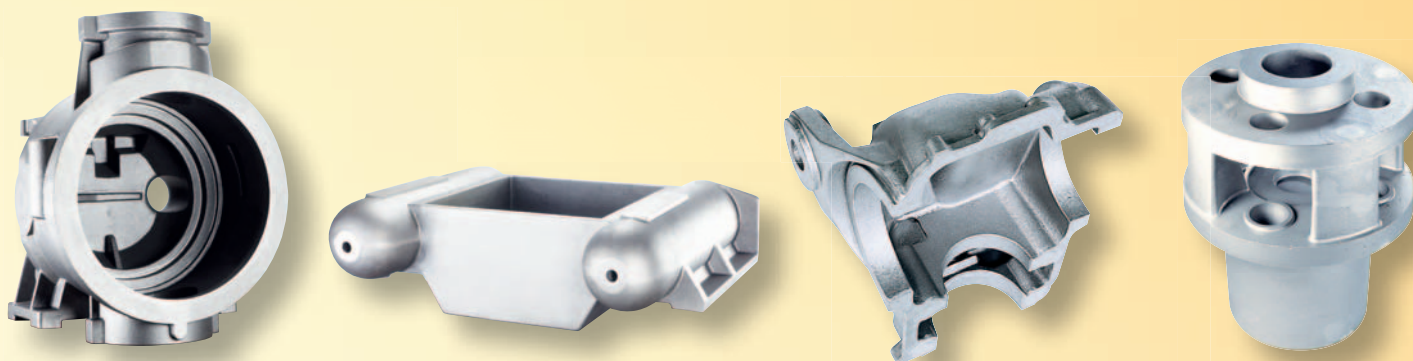
nodular cast iron



compacted graphite iron

- GJL 200 – GJL 350 FERROCAST DIN EN 1561 grey cast iron
- GJS 350 – GJS 800 FERROCAST DIN EN 1563 nodular cast iron
- GJV 400 compacted graphite iron
- ADI DIN EN 1564 austempered ductile iron
- Ni-Resist austenitic cast iron
- Special alloys





## PRODUCTION



our sand plant

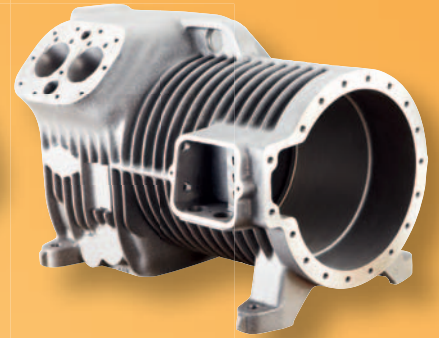
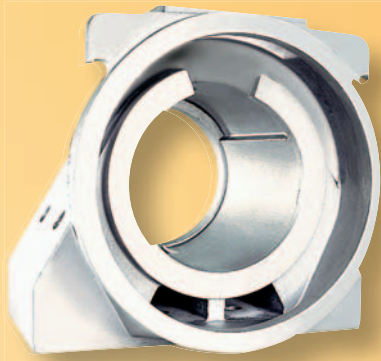
### MELTING SHOP

- two medium frequency crucible induction furnaces
- melting rate 6 t/h each

### MOLDING SHOP

- BOX MOLDING PLANT
  - box size: 950 x 880 x 300/300 mm (L/W/H)
  - unit weight: up to 120 kgs
- BOXLESS BLOCK MOLDING PLANT (variable boxless bundles)
  - max.: 1120 x 1560 x 425/425/425 mm (L/W/H)
  - unit weight: up to 600 kgs
- HAND MOLDING SHOP
  - box size: 3000 x 3000 x 2500 mm (L/W/H)
  - unit weight: grey cast iron up to 4.000 kgs
  - nodular graphite cast iron up to 3.500 kgs
- AUTOMATIC MOLDING PLANT open sand casting
  - box size: 1360 x 1070 x 150 mm (L/W/H)
  - unit weight: up to 65 kgs





## FINISHING



- HEAT TREATING
- HARDENING
- ROUGH MACHINING
- COMPLETE COMPONENTS
- UNDERCOAT / LAQUERING
- SURFACE TREATMENT